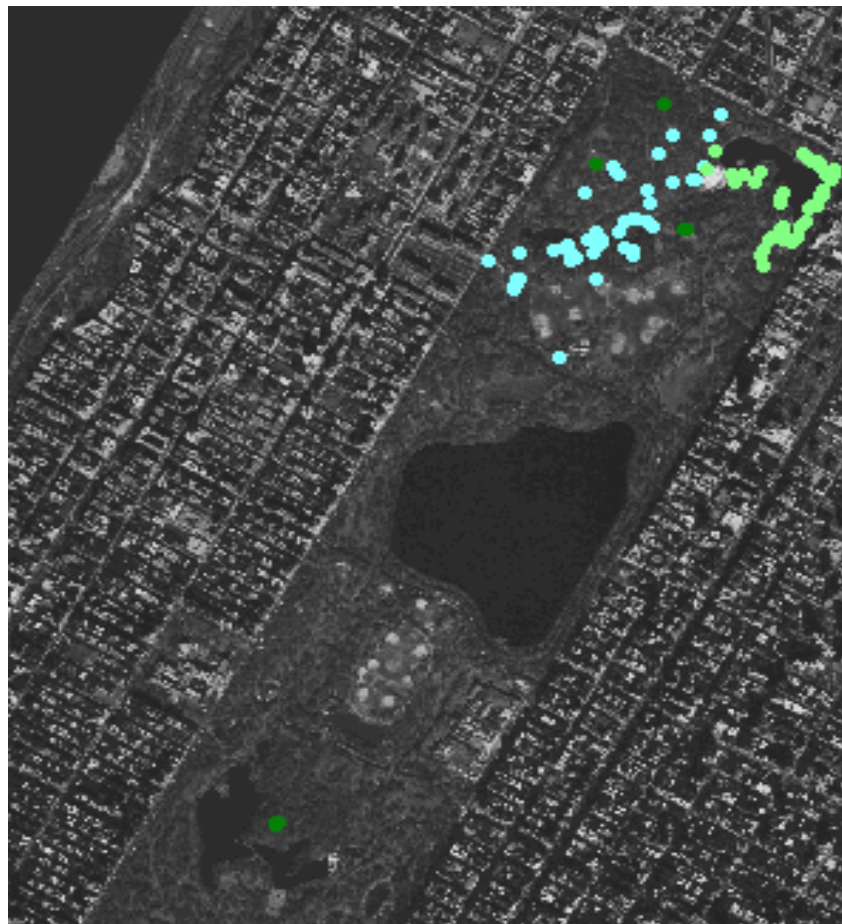


Observed Species for Central Park BioBlitz 2006 Trees

Family	Genus	Species	Common Name
Invasive			
Aceraceae	Acer	platanoides	Norway maple
Aceraceae	Acer	pseudoplatanus	Sycamore maple
Fabaceae	Robinia	pseudo-acacia	Black locust
Fagaceae	Quercus	cerris	European turkey oak
Ulmaceae	Ulmus	pumila	Dwarf elm, Siberian elm
			Ailanthus
Non-invasive			
Aceraceae	Acer	saccharum	Sugar maple
Cupressaceae	Thuja	occidentalis	Northern white cedar
Fabaceae	Gymnocladus	dioica	Kentucky coffee tree
Fagaceae	Fagus	sylvatica	European beech
Fagaceae	Quercus	coccinea	Scarlet oak
Fagaceae	Quercus	palustris	Pin oak
Fagaceae	Quercus	rubra	Red oak
Fagaceae	Quercus	velutina	Black oak
Ginkgoaceae	Ginkgo	biloba	Ginkgo
Hamamelidaceae	Liquidambar	styraciflua	Sweet gum
Hippocastanaceae	Aesculus	hippocastanum	Horse chestnut
Juglandaceae	Carya	glabra	Pignut (Hickory)
Juglandaceae	Carya	tomentosa	Mockernut
Magnoliaceae	Magnolia	virginiana	Sweet bay
Moraceae	Maclura	pomifera	Osage orange
Oleaceae	Fraxinus	americana	White ash
Oleaceae	Syringa	vulgaris	Lilac
Pinaceae	Pinus	strobus	White pine
Platanaceae	Plantago	x hybrida	London plane tree
Rosaceae	Malus	coronaria	American crab
Rosaceae	Malus	sp.	
Rosaceae	Prunus	serotina	Black cherry
Salicaceae	Salix	nigra	Black willow
Salicaceae	Salix	x rubens	Willow
Simaroubaceae	Ailanthus	altissima	Tree-of-heaven
Taxaceae	Taxus	sp.	Yew

Ulmaceae	Celtis	occidentalis	Hackberry
Ulmaceae	Ulmus	americana	American elm
Ulmaceae	Ulmus	glabra	Wych elm
		rubra	Red malbur
	Viburnum		Common leaf
			Serviceberry
	Quercus	acutissinn	Sawtooth oak
Rosaceae	Crataegus		Hawthorn
Moraceae	Brossenitia		Paper mulberry
	Carya	cordeiformis	Butternut
			Hickory
			Red pine
	Carpinus	sp.	
			Japanese scarlet



■ Trees