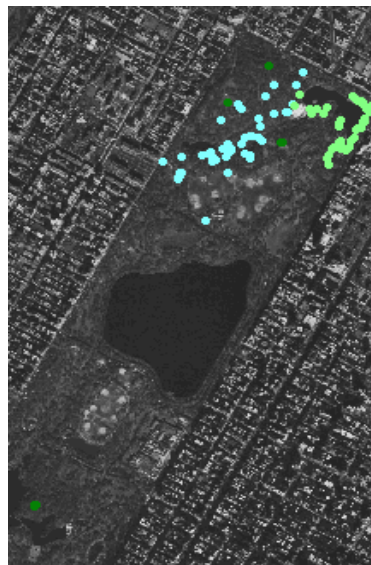


Observed Species for Central Park BioBlitz 2006

Fungi & Bryophytes

Genus	Species	Common Name
Hydnochaete	olivaceum	Brown-toothed Crust Fungus
Mycena	sp.	
Phellinus	gilvus	Mustard-yellow Polypore
Phellinus	rimosus	Black Locust Polypore
Pluteus	cervinus	Fawn Mushroom
Pluteus	sp.	
Polyporus	squamosus	Dryad's Saddle
Poria	spissa	Red-staining Orange Polypore
Russula	sp. (1)	
Stemonitis	splendens	Chocolate-tube Slime Mold
Stereum	complicatum	Crowded parchment fungus
Stereum	hirsutum	Hairy parchment fungus
Stropharia	rugoso-annulata	Wine-cap
Trametes	elegans	Elegant Turkey-tail Polypore
Trichaptum	biforme	Violet-toothed Polypore
Stereum	ostrea	False Turkey-tail Parchment
Myxomycete	sp.	slime mold
Laccaria	striatula	Striate-cap Laccaria
Trametes	elegans	Elegant Turkey-tail Polypore
Hypoxylon	fragiforme	Red Cushion Fungus
Scleroderma	citrinum	Pigskin Poison Puffball
Amanita	rubescens	The Blusher
Collybia	butyracea	Buttery-cap Collybia
Mutinus	rubicunbus	Red-helmet Stinkhorn
Russula	sp. 1	
Russula	sp. 2	
Panaeolina	foenicicii	Lawn Mower's Mushroom
Mycena	sp.	
Hypomyces	aurantius	Orange Polypore Mold
Ganoderma	applanatum	Artist's Conk Polypore
Hypomyces	hyalinus	Amanita Mold
Hypoxylan	rubiginosum	Brick-red Cushion Fungus
Scleroderma	citrinum	same as #56 above
Phellinus	rimosus	Black Locust Polypore
Hemitrichia	sp.	
Scleroderma	bovista	Small smooth Scleroderma
Stereum	hirsutum	Hairy Parchment Fungus
Arcyria	sp.	
Resupinatus	applicatus	Black Jelly Oyster Mushroom
Amanita	vaginata v plumbea	Lead-gray Grisette Amanita
Stereum	complicatum	Crowded Parchment Fungus
Corticium	sp.	
Conocybe	lactea	White Dunce Cap
Cyathus	stercoreus	Dark-egg Smooth Bird's Nest
Crucibulum	laeve	White-egg Bird's Nest Fungus
Fomes	fomentarius	Tinder Polypore
Xylaria	polymorpha	Dead Man's Fingers
Hydnochaete	olivaceum	Brown-toothed Crust Fungus
Stemonitis	fusca	Purple-black Tube Slime Mold



■ Fungi

CENTRAL PARK 2006 CONSOLIDATED MUSHROOM CHECKLIST

JUNE 23-JULY 21

KINGDOM: FUNGI

CLASS: ASCOMYCETES

Hypomyces	aurantius	Orange Polypore Mold
Hypomyces	chrysospermus	Golden Hypomyces
Hypomyces	hyalinus	Amanita Mold
Hypoxylon	fragiforme	Red Cushion Fungus
Hypoxylon	rubiginosum	Brick-red Cushion Fungus
Mollisia	cinerea	Gray Dot
Xylaria	hypoxylon	Carbon Antlers
Xylaria	polymorpha	Dead Man's Fingers

CLASS BASIDIOMYCETES

ORDER: POLYPORES

Fomes	fomentarius	Tinder Polypore
Fomitopsis	spraguei	Punky Gray Polypore
Ganoderma	applanatum	Artist's Conk Polypore
Inonotus	dryadeus	Warted Oak Polypore
Irpex	lacteus	Milk-white Toothed Polypore
Laetiporus	cincinnatis	White-pored Chicken Mushroom
Oxyporus	populinus	Mossy Maple Polypore
Phellinus	gilvus	Mustard-yellow Polypore
Phellinus	rimosus	Black Locust Polypore
Polyporus	squamosus	Dryad's Saddle
Poronidulus	conchifer	Little Nest Polypore
Trametes	elegans	Elegant Turkey-tail Polypore
Trametes	versicolor	Turkey-tail Polypore
Trichaptum	biforme	Violet-toothed Polypore

ORDER: CRUST & PARCHMENT FUNGI

Corticium	sp.	
Hydnochaete	olivaceum	Brown-toothed Crust Fungus
Stereum	complicatum	Crowded Parchment Fungus
Stereum	hirsutum	Hairy Parchment Fungus
Stereum	ostrea	False Turkey-tail Parchment

ORDER: BOLETES

Boletus	campestris	Meadow Bolete
Boletus	chrysenteron	Red-cracked Bolete
Boletus	pulverulentus	Dark Cap Blue-stainer
Boletus	subvelutipes	Red-mouth Bolete
Gyroporus	castaneus	Chestnut Bolete

ORDER: GILLED MUSHROOMS

FAMILY: AGARICACEAE

Agaricus	bitorquis	Spring Agaricus
Lepiota	americana	Reddening Lepiota

FAMILY: AMANITACEAE

Amanita	flavorubens	Yellow Blusher
Amanita	rubescens	The Blusher
Amanita	vaginata v 'grisea'	Gray Grisette Amanita
Amanita	vaginata v plumbea	Lead-gray Grisette Amanita

FAMILY: BOLBITIACEAE

Agrocybe	dura	Hard Agrocybe
Conocybe	lactea	White Duncce Cap

FAMILY: COPRINACEAE

Coprinus	atramentarius	Alcohol Inky Cap
Coprinus	micaceus	Mica Cap
Coprinus	plicatilis	Japanese Umbrella Inky Cap
Coprinus	quadrididus	Scaly Inky Cap
Panaeolina	foenisecii	Lawn Mower's Mushroom
Psathyrella	candolleana	Common Psathyrella
Psathyrella	conopilea	Golden-dot Psathyrella
Psathyrella	deliniata	Wrinkled Cap Psathyrella
Psathyrella	sp. 1	
Psathyrella	sp. 2	

FAMILY: CORTINARIACEAE

Inocybe	cf. abundans	White and Brown Fiber Head
Inocybe	albodisca	White-disc Fiber Head
Inocybe	caesariata	Caesar's Fiber Head
Inocybe	cf. decipientoides	Brown Rimose Lawn Fiber Head
Inocybe	cf. fastigiella	Tall Rimose Fiber Head
Inocybe	cf. intricata	Rimose Shiny Brown Fiber Head
Inocybe	cf. lacera	Torn Fiber Head
Inocybe	cf. nigrodisca	Black-disc Fiber Head
Inocybe	rimosoides	Common NYC Fiber Head

FAMILY: CREPIDOTACEAE

Tubaria	cf. furfuracea	Fringed Tubaria
---------	----------------	-----------------

FAMILY: PLUTEACEAE

Pluteus	cervinus	Fawn Mushroom
Pluteus	cf. cervinus	Fawn Mushroom
Pluteus	cf. nanus	Plush Brown Fawn Mushroom

FAMILY: RUSSULACEAE

Lactarius	cf. subdulcis	Watery Milky Cap
Lactarius	cf. oculatus	Liver Brown Cap Milky
Russula	cf. albidula	Fragile White Russula
Russula	aeruginea	Tacky Green Russula
Russula	albonigra	Black Staining Russula
Russula	crustosa	Green Quilt Russula
Russula	cyanoxantha	Forked Gill Base Russula
Russula	cf. eccentrica	Pink Gill Russula
Russula	cf. pulchra	Beautiful Red Russula
Russula	foetentula	Orange-red Cap Fetid Russula
Russula	fragrantissima	Marzipane Scented Russula
Russula	cf. fragilis	Fragile Russula
Russula	mariae	Purple-bloom Russula
Russula	modesta	Dry Green-blue Cap Russula
Russula	ochroleucoides	Dry Orange Cap Russula
Russula	pectinatoides	Pale yellow fetid Russula
Russula	silvicola	Dry Land Emetic Russula
Russula	variata	Variable Forked Gill Russula
Russula	vinacea	Blackish-red Russula
Russula	cf. sericeonitens	Silky Purple Russula
Russula	cf. tenuipes	Orange-spotted Red Russula
Russula	cf. ochrophylla	Purple and Yellow Russula
Russula	cf. stricta	Ochre-hued Russula
Russula	cf. amoenolens	Grayish yellow fetid Russula
Russula	cf. uncialis	Rose Striate Russula
Russula	cf. decolorans	Gray Stipe Russula

FAMILY: STROPHARIACEAE		
Stropharia	rugoso-annulata	Wine Cap
FAMILY TRICHOLOMATACEAE		
Collybia	butyracea	Buttery Collybia
Collybia	dichrous	Dark Red-brown Collybia
Collybia	luxurians	Giant Wood-chip Collybia
Collybia	semihirtipes	Hairy-stalked Collybia
Laccaria	laccata	Common Laccaria
Laccaria	striatula	Striate Cap Laccaria
Laccaria	tortilis	Tiny Laccaria
Marasmius	epiphyllus	Leaf Marasmius
Marasmius	oreades	Fairy Ring Mushroom
Marasmius	scorodoni	Garlic Marasmius
Marasmius	sp.	
Mycena	corticola	Tiny Tree Mycena
Mycena	cf. immaculata	Translucent White Mycena
Mycena	sp.	
Pleurotus	ostreatus	Oyster Mushroom
Resupinatus	applicatus	Black Jelly Oyster Mushroom
Rickenella	fibula	Orange Moss Agaric
SUB-CLASS: GASTEROMYCETES		
ORDER: TRUE PUFFBALLS		
Lycoperdon	coloratum	Golden-egg Puffball
Lycoperdon	sp.	
ORDER: FALSE PUFFBALLS		
Scleroderma	bovista	Small Smooth Scleroderma
Scleroderma	citrinum	Pigskin Poison Puffball
ORDER: BIRD'S NEST FUNGI		
Crucibulum	laeve	White-egg Bird's Nest Fungus
Cyathus	stercoreus	Dark-egg Smooth Bird's Nest
Cyathus	striatus	Striate Splash Cups
Nidula	candida	Common Gel Bird's Nest
ORDER: STINKHORNS		
Mutinus	elegans	Elegant Stinkhorn
Phallus	rubicundus	Red-helmet Stinkhorn
CLASS: MYXOMYCETES (The Slime Molds)		
Arcyria	sp.	
Fuligo	septica	Scrambled-egg Slime Mold
Hemitrichia	sp.	
Stemonitis	splendens	Chocolate-tube Slime Mold